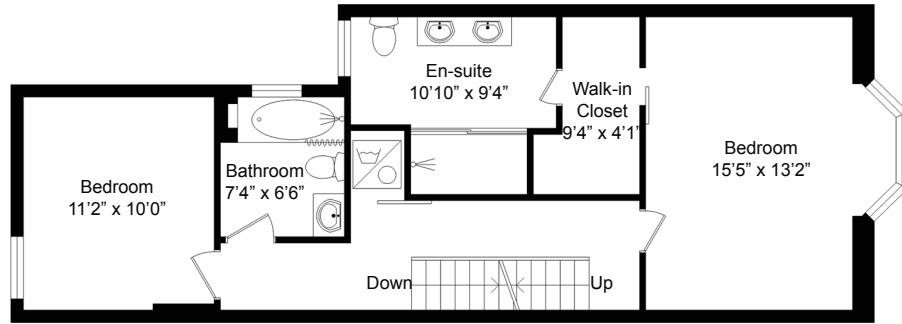
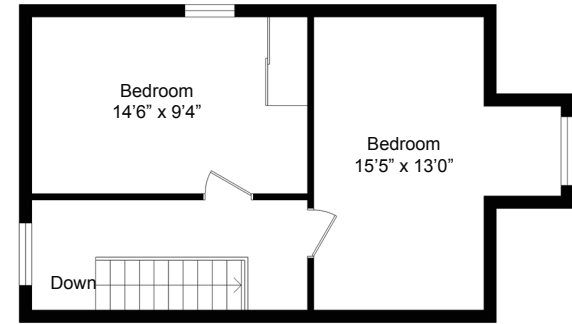


# 213 BEATRICE STREET, TORONTO

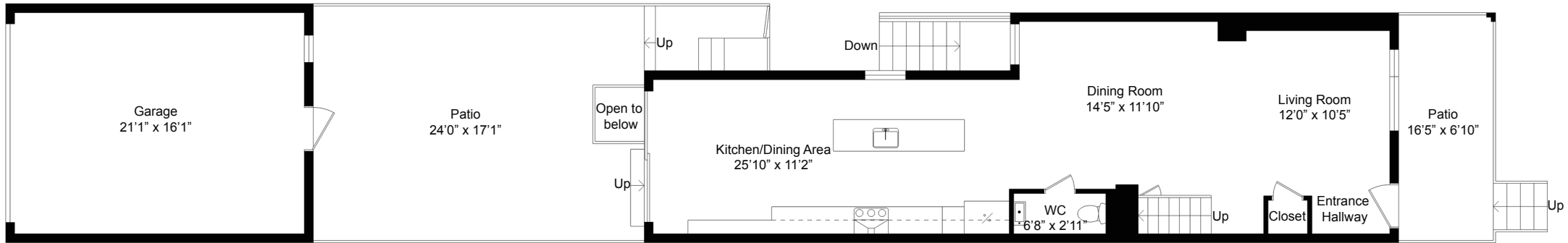
APPROXIMATE GROSS INTERNAL AREA 2,486 ft<sup>2</sup> (EXCLUDING GARAGE)



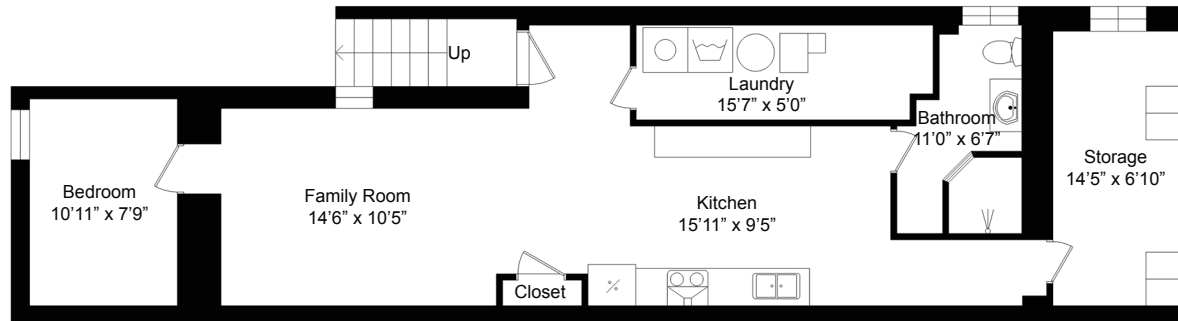
SECOND FLOOR  
613 ft<sup>2</sup>



THIRD FLOOR  
386 ft<sup>2</sup>



MAIN FLOOR  
705 ft<sup>2</sup>



LOWER FLOOR  
782 ft<sup>2</sup>