



57 Astley

CARE
CORE ASSETS REAL ESTATE



The Kitchen

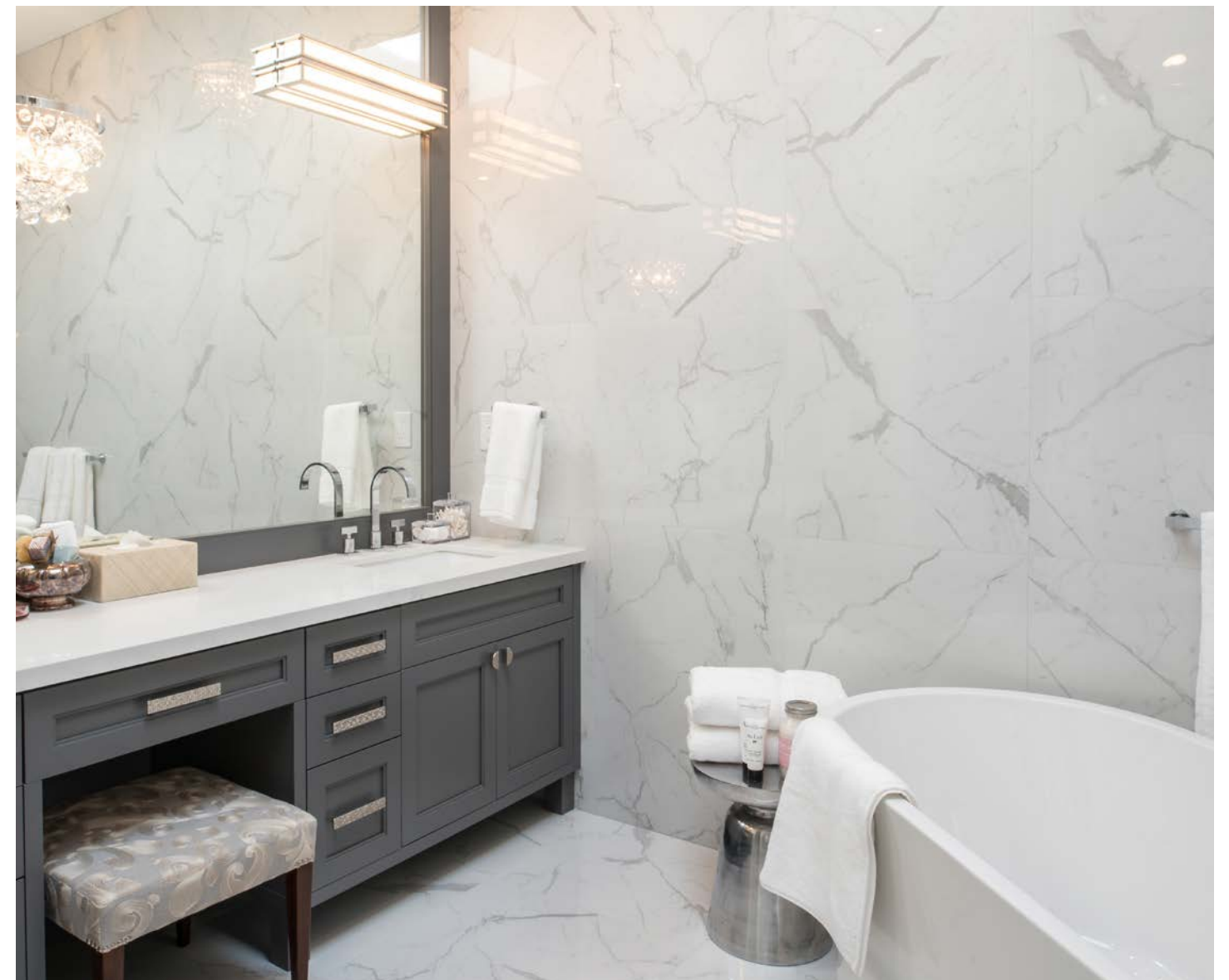




Master Bedroom



Master Ensuite









The Exterior





Perched high above the Beltline Trail and Mud Creek, it is easy to forget that 57 Astley sits in the heart of the city. The ravine setting provides a tranquility that is more akin to living in the countryside.

This home is the perfect blend of city and country, and retains much of the timeless character so notable in Rosedale.

It was carefully crafted to provide a classic elegance with the conveniences of modern building technology - suitable for those with the highest standards and most discerning palates. It offers a rare and subtle confidence with over 3,000 sq ft of living space, soaring 11' foot ceilings, sun-drenched principal rooms, custom millwork, and an outdoor patio space for those long Summer nights.

Fifty-Seven Astley is a rare example of a thoughtful transformation that carefully aligns with the local streetscape and natural topography of the surrounding ravine.