

A two-story brick house with a large tree in the foreground and a yellow fire hydrant on the sidewalk. The house has a red brick lower level and a white upper level with black window frames. A large tree with green leaves is on the right side of the house. A yellow fire hydrant is on the sidewalk in the foreground. The house number 126 is visible on the right side of the house.

[the hudson condos]

126 HUDSON

Welcome To The Hudson Condos

Originally built in 1928, this charming home has been stripped back to the bare bones and rebuilt from the ground up, and then converted into two luxurious condominiums. Every detail has been carefully thought out and crafted to maintain the historical integrity of the neighbourhood. The finishings are consistent with the city's finest hotels from the wide plank white oak flooring to the gourmet kitchens and appliances.

The finishes throughout this project are truly exceptional and feature: Ridley windows and doors, custom kitchens from Pearl Kitchens, Silestone countertops and backsplash, luxury appliances from Dacor and Miele,

AcquaBrass and Rubinet faucets, lighting fixtures such as a rare Gaetano Sciolari chandelier to current designs from Peter Bristol, Aerin Lauder, Sean Lavin, Barbara Berry to custom millwork, ample built-in storage, parking and more.

The release of the Hudson Condos marks a rare opportunity to move into one of the finest neighbourhoods in the city without the huge expense of purchasing.

126 HUDSON

The largest suite (126 Hudson) is a sprawling 2,616 square feet spanning over two floors the main and lower level. The suite features 4-beds, 4-baths, 9' ceilings on both floors, polished concrete floors on the lower level, in-floor heating, two large great rooms, a gas fireplace and an exceptional gourmet eat-in kitchen with Miele and Dacor appliances. This is the perfect home for a family (large or small) with room to spare.

This suite also comes with a one parking spot, ample street parking and a 580 square foot with a BBQ gas line for those warm Summer nights.

THE LOCATION

Perched high above the Beltline Trail and Mud Creek, The Hudson Condos is centrally located in the heart of Moore Park - one of Toronto's most sought after neighborhoods. The house is a mere 11 min drive and a 20 minute bike ride to downtown, Toronto (offering a bike score of 84).

Surrounded by evergreens and mature oaks - the setting truly feels like quiet country living. The ravine trails offer easy escape to nature and perfect for dog walking and a long run. The trail also provides easy access the Brickworks and the Saturday morning farmers market.

THE SCHOOLS

Quite literally, there is no better location in the city for both public and private schools. If you have school aged children, the local public schools are Whitney Public School, North Toronto Collegiate Institute, Deer Park Junior and Senior Public School, Northern Secondary School and the Catholic school is Our Lady of Perpetual Help.

Some of the country's best private schools are literally minutes away. They include: Branksome Hall, Upper Canada College, Bishop Strachan, York School, Toronto Prep, Haveral, Linden, Crestwood Prep, National Ballet School, Linden, De La Salle, Blyth Academy and Greenwood College.

THE LIFESTYLE

Moore Park offers one of the best urban lifestyles in Toronto. The community is rich with culture and a sense of community. It is centrally located in the middle of the city with easy access to the highways, parks, outdoor rinks, and so much more. In Moore Park, you are minutes to some of the top restaurants, shopping in Yorkville, local amenities and schools. The proximity to the ravine is perfect for a healthy lifestyle and outdoor walking / running.



The Kitchen



Broker of Record | Adam Brind

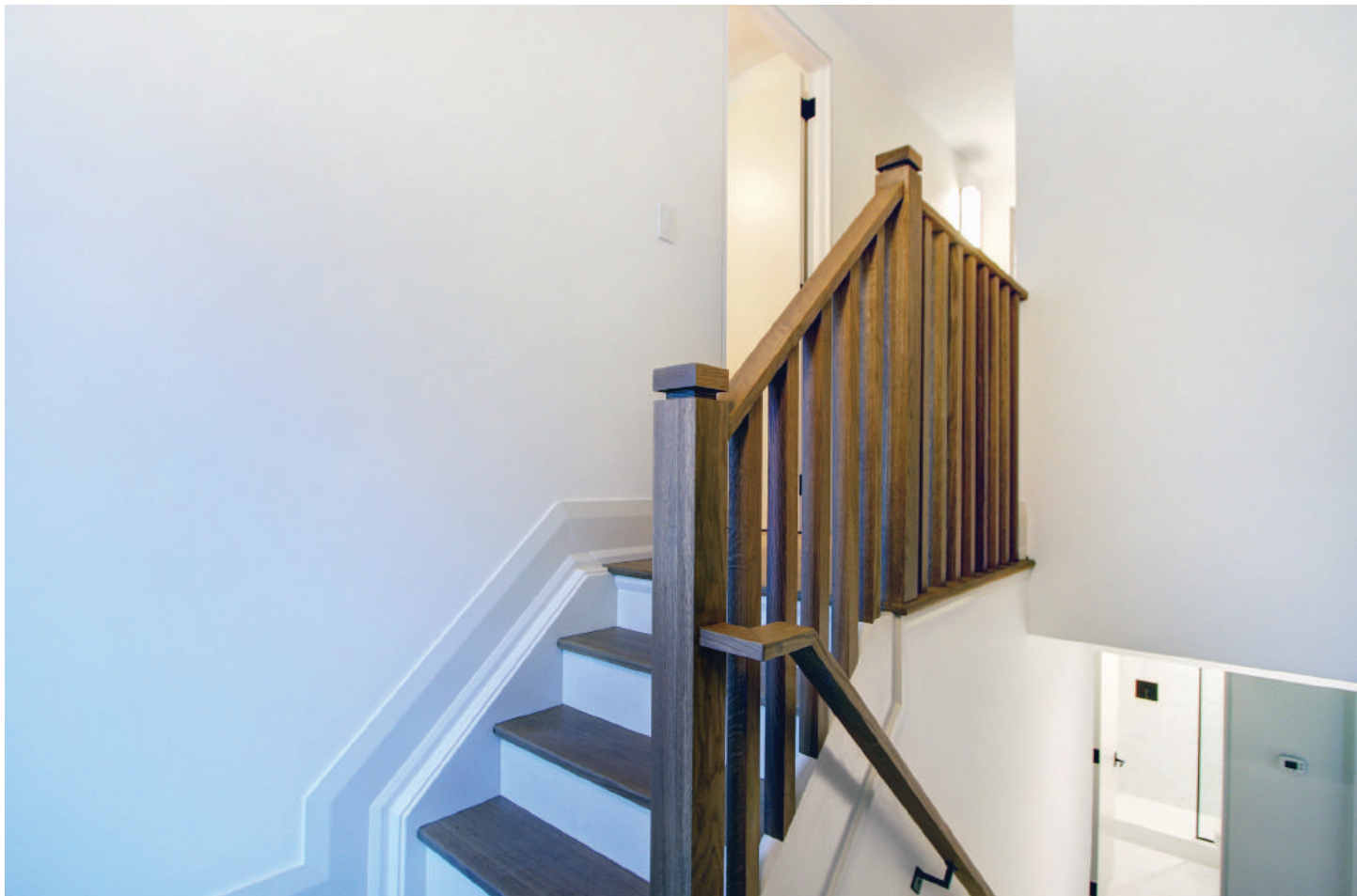


Broker of Record | Adam Brind



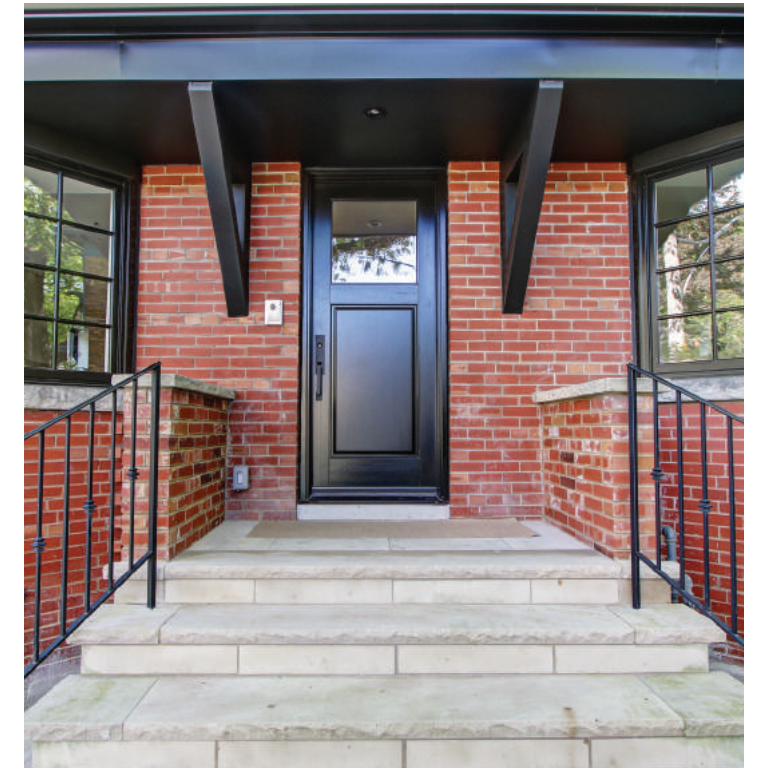




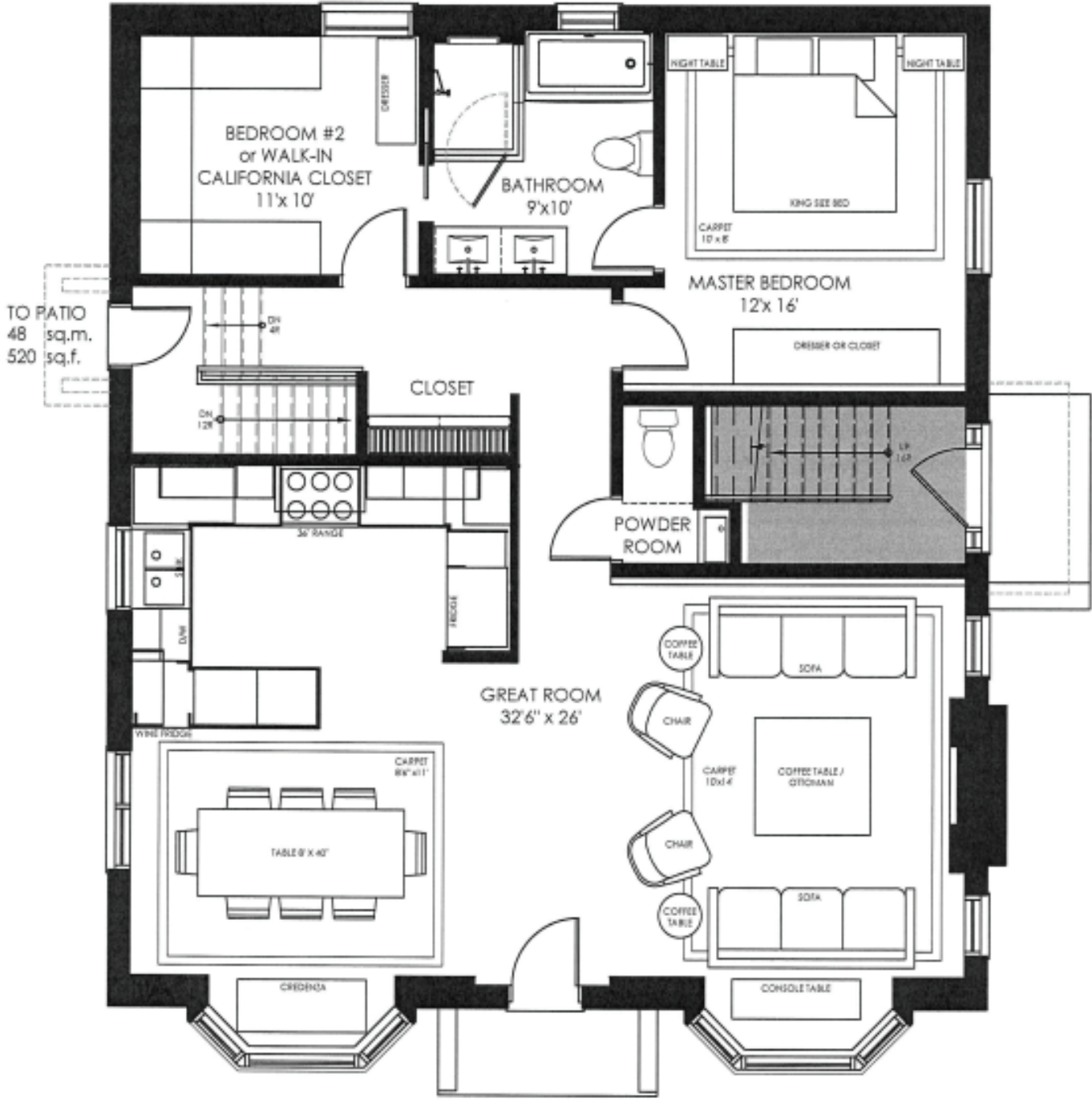




The Exterior



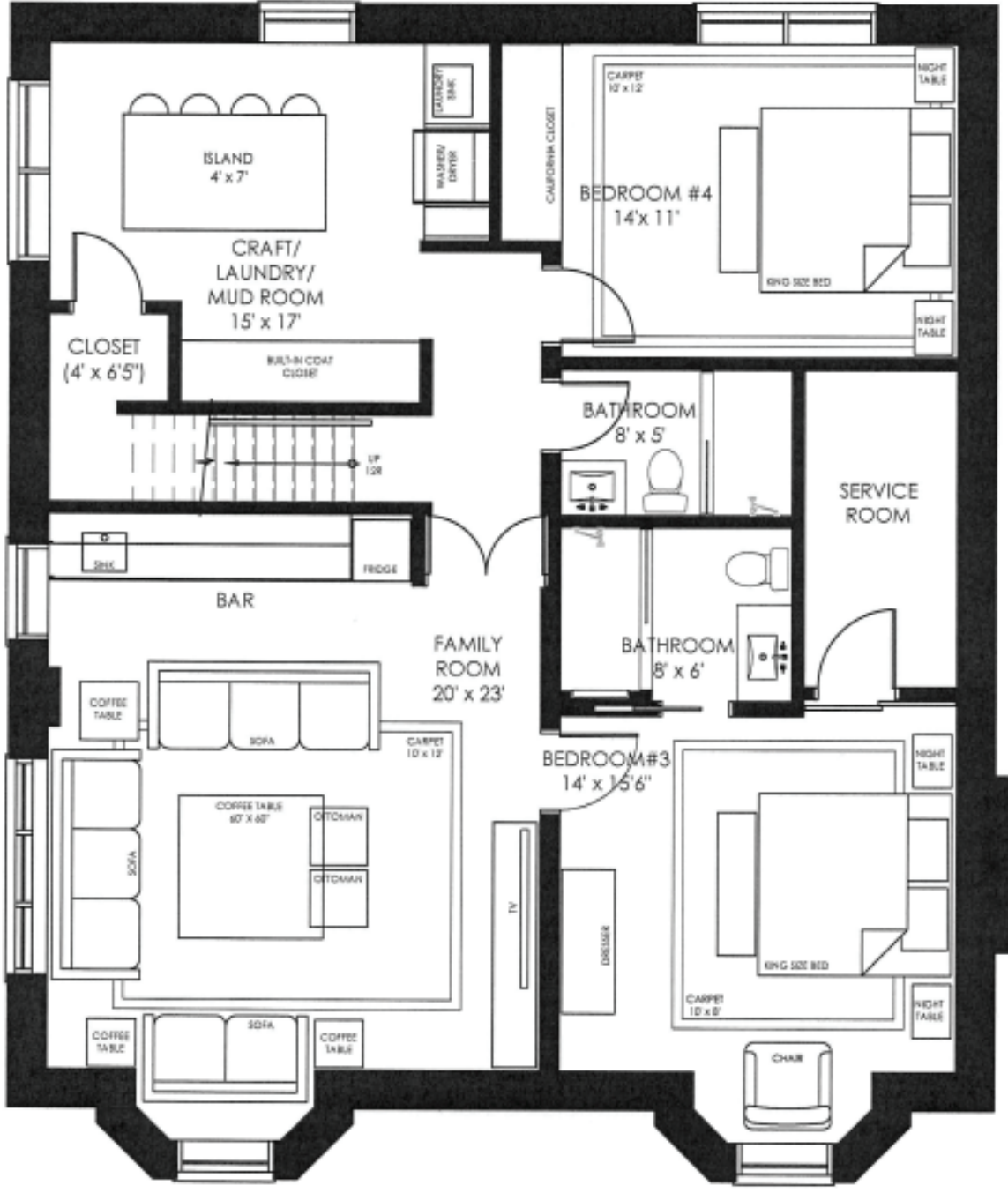
Floor Plans



126 HUDSON DRIVE
 FIRST FLOOR
 118.92 sq.m.
 1280 sq.f.

TOTAL SIZE
 243 sq.m.
 2616 sq.f.

Floor Plans



126 HUDSON DRIVE
 LOWER LEVEL
 124.12 sq.m.
 1336 sq.f.

TOTAL SIZE
 243 sq.m.
 2616 sq.f.